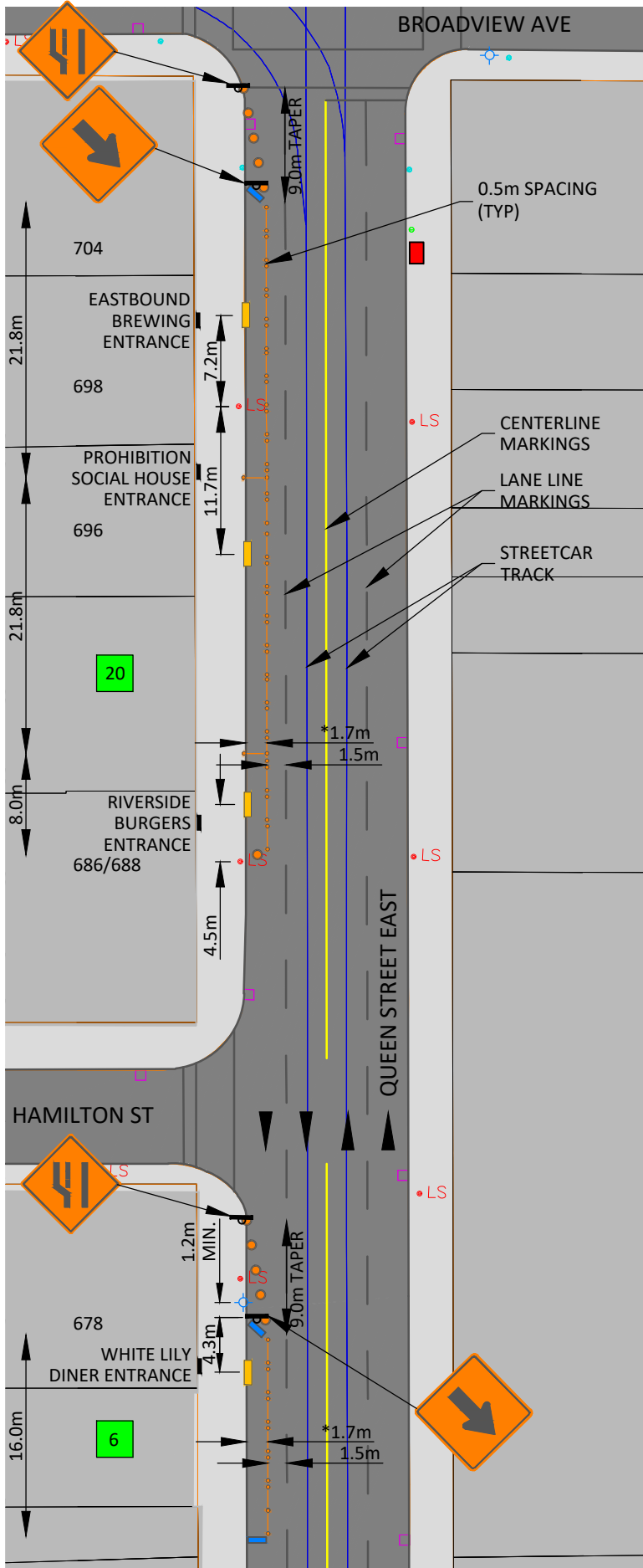
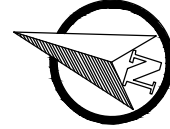


RIVERSIDE DISTRICT BIA  
 CafeTO 2021  
 TRAFFIC PLAN 01  
 HAMILTON ST TO BROADVIEW AVE  
 668-704 QUEEN STREET EAST



LEGEND

- TC-54 BARREL (11)
- TC-51 2 CANDLESTICKS WITH BARRIER (30)
- JERSEY WALL (3)
- ASPHALT PED RAMP TO BE INSTALLED
- NUMBER OF PLANTER BOXES TO BE INSTALLED
- WOODEN DECK
- TRAFFIC DIRECTION
- SIGNAGE
- TTC STOP
- FIRE HYDRANT
- CATCHBASIN
- EXISTING POLE - LIGHT STANDARD/TRAFFIC SIGNAL/HYDRO
- ON STREET PAY PARKING SPACES LOST (9)

\* ASSUMED DIMENSION, MAY VARY BASED ON MEASUREMENTS TO PAVEMENT MARKINGS

