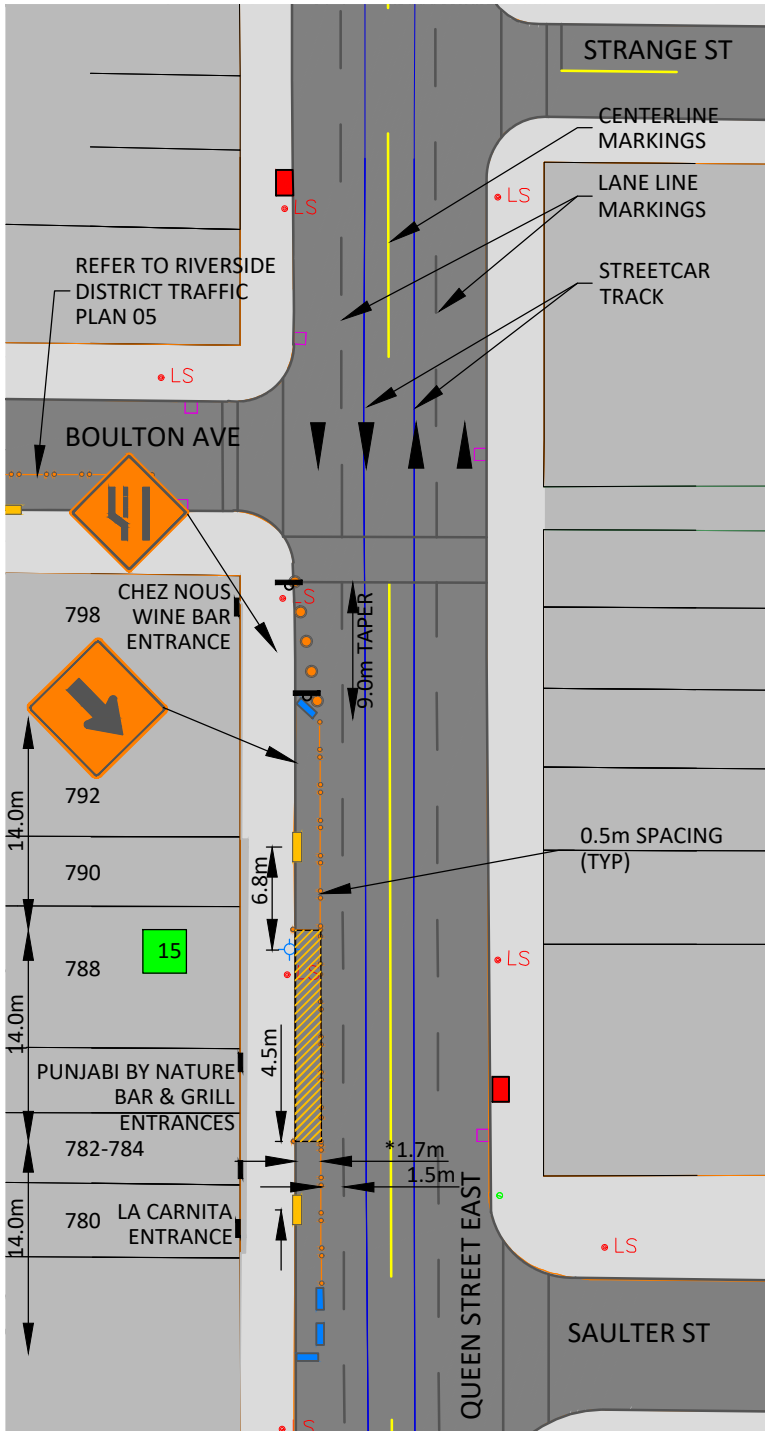
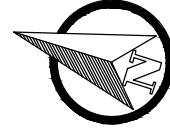


RIVERSIDE DISTRICT BIA  
 CafeTO 2021  
 TRAFFIC PLAN 04  
 SAULTER ST TO STRANGE ST  
 778-808 QUEEN STREET EAST



LEGEND

- TC-54 BARREL (5)
- TC-51 2 CANDLESTICKS WITH BARRIER (18)
- JERSEY WALL (4)
- ASPHALT PED RAMP TO BE INSTALLED
- NUMBER OF PLANTER BOXES TO BE INSTALLED
- WOODEN DECK
- TRAFFIC DIRECTION
- SIGNAGE
- TTC STOP
- FIRE HYDRANT
- CATCHBASIN
- EXISTING POLE - LIGHT STANDARD/TRAFFIC SIGNAL/HYDRO
- ON STREET PAY PARKING SPACES LOST (8)

\* ASSUMED DIMENSION, MAY VARY BASED ON MEASUREMENTS TO PAVEMENT MARKINGS

