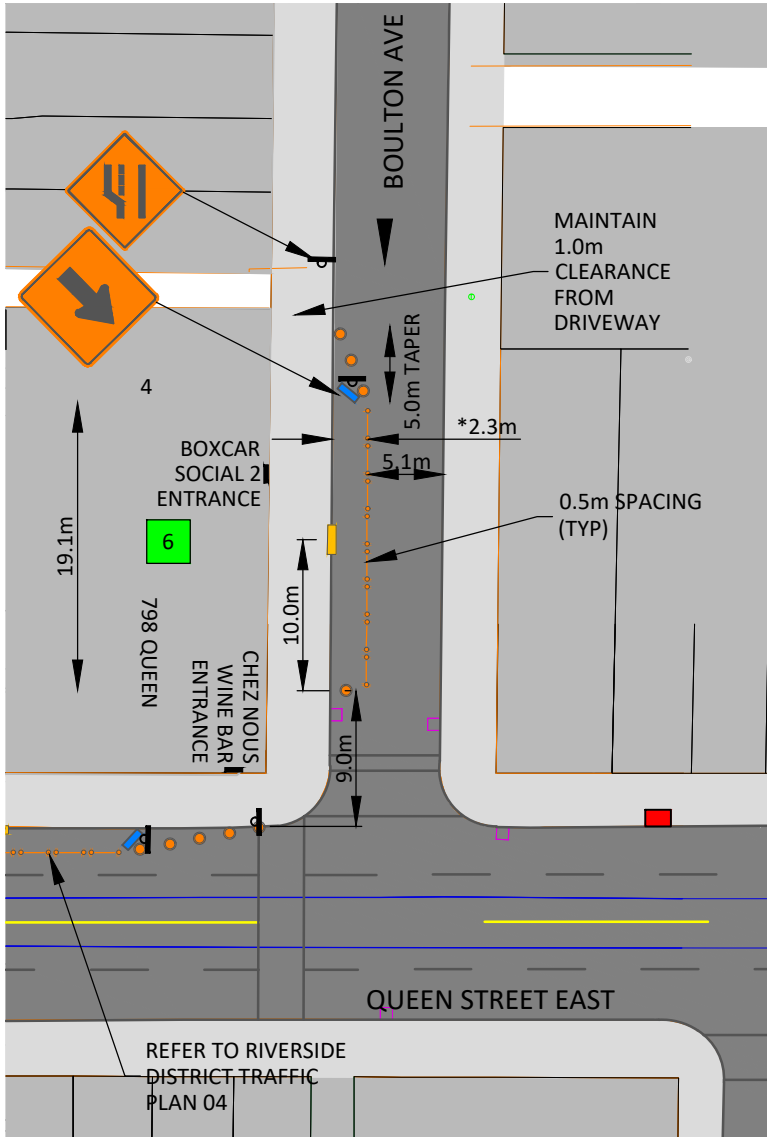
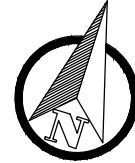


RIVERSIDE DISTRICT BIA
 CafeTO 2021
 TRAFFIC PLAN 05
 QUEEN ST EAST
 4-12 BOLTON AVENUE



LEGEND

- TC-54 BARREL (4)
- TC-51 2 CANDLESTICKS WITH BARRIER (8)
- JERSEY WALL (1)
- ASPHALT PED RAMP TO BE INSTALLED
- NUMBER OF PLANTER BOXES TO BE INSTALLED
- WOODEN DECK
- TRAFFIC DIRECTION
- SIGNAGE
- TTC STOP
- FIRE HYDRANT
- CATCHBASIN
- EXISTING POLE - LIGHT STANDARD/TRAFFIC SIGNAL/HYDRO
- LS/TS/HP
- ON STREET PAY PARKING SPACES LOST (3)

* ASSUMED DIMENSION, MAY VARY BASED ON MEASUREMENTS TO PAVEMENT MARKINGS

