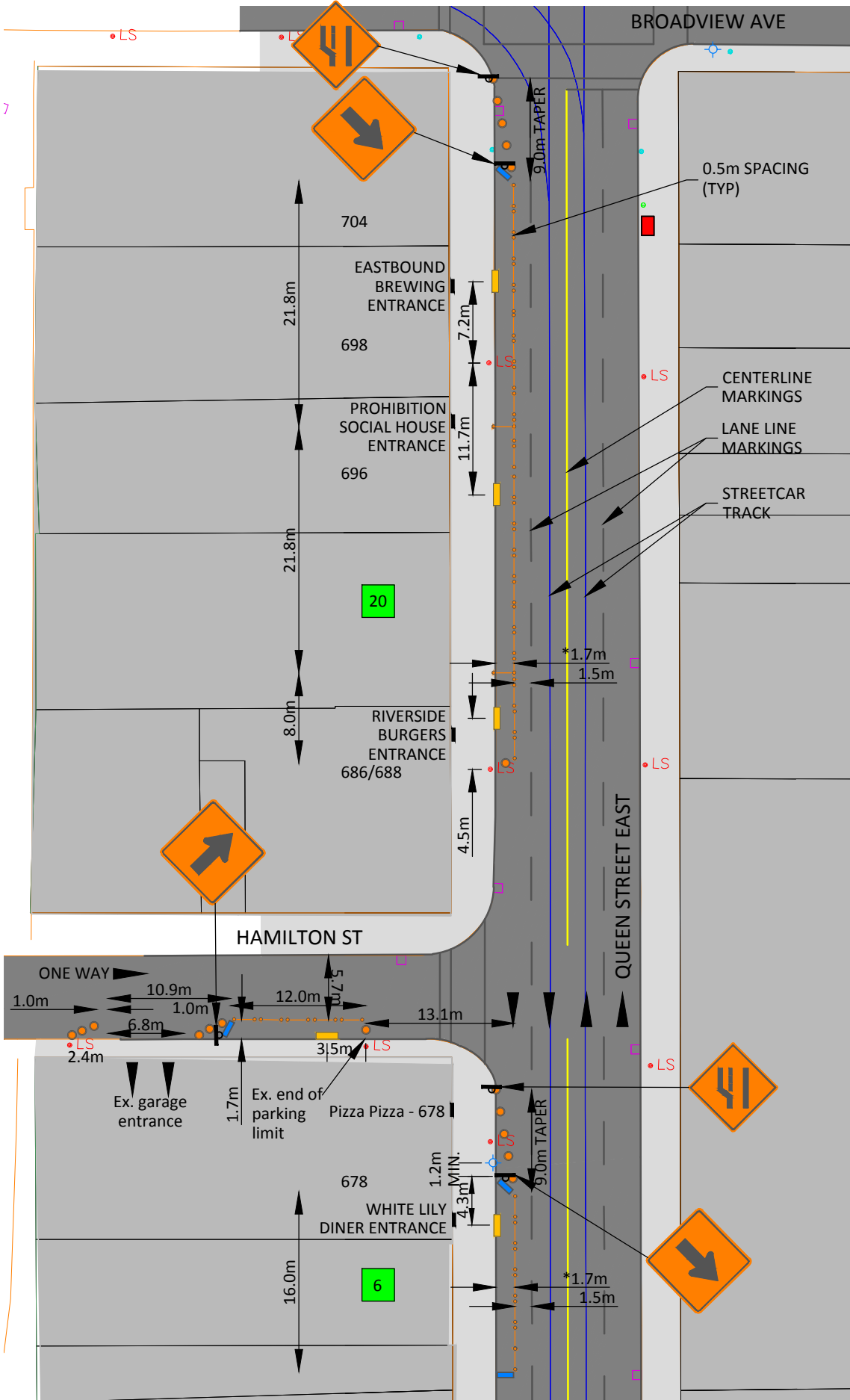
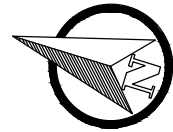







Riverside District BIA
 CafeTO 2021
 TRAFFIC PLAN 01
 HAMILTON ST TO
 BROADVIEW AVE
 668-704 Queen St. E.



LEGEND

-  TC-54 BARREL (18)
-  TC-51 2 CANDLESTICKS WITH BARRIER (35)
-  JERSEY WALL (4)
-  ASPHALT PED RAMP TO BE INSTALLED
-  NUMBER OF PLANTER BOXES TO BE INSTALLED
-  WOODEN DECK
-  TRAFFIC DIRECTION
-  SIGNAGE
-  TTC STOP
-  FIRE HYDRANT
-  CATCHBASIN
-  EXISTING POLE - LIGHT STANDARD/TRAFFIC SIGNAL/HYDRO
-  LS/TS/HP
-  ON STREET PAY PARKING SPACES LOST (12)

* ASSUMED DIMENSION, MAY VARY BASED ON MEASUREMENTS TO PAVEMENT MARKINGS

